



FOR IMMEDIATE RELEASE
April 13, 2015

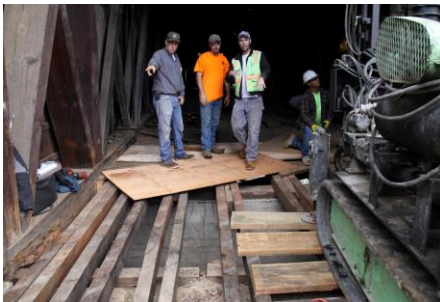
Doug Moon, Chair, Save Our Bridge Committee
(530) 205-9554, moon.henry1@gmail.com
Dave Anderson, Project Monitor
(530) 432-2359; dgslanderson@att.net
Caleb Dardick, Executive Director, SYRCL
(530) 265-5961 x207; Caleb@syrcf.org

RENOVATION OF THE BRIDGE BEGINS!



There is now highly visible evidence on the progress being made to Save Our Bridge! Stabilization, the first phase of the work on the historic wood covered Bridge at Bridgeport, South Yuba River State Park, is now complete. The twin steel beam towers are up, the supporting beams under the Bridge are installed and all of the stabilizing cables are tied down and adjusted to provide support during the next phase of work. It is not the prettiest of structures however it now enables the real work to begin.

RESTORATION!



The Restoration and Repair stage of the work (Phase II) has already begun. The general contractor for this work, Buehler and Buehler Structural Engineers Inc., has begun inspections, testing and in some cases removal of material for further analysis. This team of experts is led by Larry Jones, Vice President of Buehler & Buehler (pictured above on right with Doug Moon). Mr. Jones stated “It is important to maintain the historic fabric of the Bridge. It is a marvel of engineering.”

They are employing geotechnical, schematic design, wood/timber and historical assessment experts to determine the extent of damage to the Bridge and come up with a plan for repairs. They also will be able to determine an up-to-date estimate of the costs to complete restoration. The plan is for this preliminary assessment work to be completed by July 2015. “We want everyone to be able to enjoy the Bridge far into the future. We are committed to doing this project right!” stated Jones.

We are looking forward to meeting with representatives from the contractor and State Parks in July 2015 for a report on the assessment and estimate of costs. Dave Anderson, Project Monitor for the Save Our Bridge Campaign Committee stated; "I am pleased to see progress with the analysis. It looks like they are asking all the right questions and exploring all aspects of the Bridge."

In the meantime the Committee is still meeting regularly, monitoring progress, attending community events and maintaining communication to keep this important project in the public's and media's awareness. We are also starting to explore possible monetary grants, and with help from a grant from the California Parks Foundation, to employ a grant-writer. We want to be prepared in case additional funding is necessary to complete repairs. We ask you to stay informed and engaged in the project as it progresses. And to, once again, come to the aid of the Campaign if help is needed contacting legislators and government officials and/or there is need to gear up for a fund-raising effort.

Together we will Save Our Bridge.



Special note: State Park staff have asked us to spread the word to *Please stay away from the stabilization structures, beams and cables at the Bridge.* This is an ongoing construction zone and is very dangerous to go in areas around and under the Bridge. Please exercise caution in these areas.

For more information about the Bridge, please visit: www.southubariverstatepark.org

Article by Doug Moon

Photos by Shirley Moon, John Field